

SERVICE INFORMATION

M150.4

MODELS AFFECTED: All Coca-Cola BevMax 4 CO₂ Venders.

MODEL NUMBERS: DN5800-4C, DN3800-4C.

Revised: 1/24/18

RE: Instructions to Convert a R744 (CO₂) Bevmax Machine to an R134a Bevmax Machine.



Important: It is recommended that this conversion be performed by a qualified service professional only in a secure, safe area to allow for removal and installation of all parts and testing for proper operation once conversion is completed.

Caution: Parts removed and installed during this conversion may have sharp edges or may be hot to the touch.

To order a complete Kit – Order Kit # 65701780

Description	Kit # 65701780 Domestic BevMax 4 CO ₂ to R134a Complete Conversion Kit	QTY
AC Power Distribution Conversion Kit	65701740	1
R134a Refrigeration System Kit (Domestic)	65701270	1

To order Conversion Kit without Refrigeration Deck – Order Kit # 65701740. This must be used with approved refrigeration kit 65701270.

Description	Kit # 65701740 Domestic BevMax 4 CO ₂ to R134a AC Box Conversion Kit	QTY
R134a AC Power Distribution Box	65707070	1
R134a Domestic Compressor Harness	80492829	1
Defrost Control Harness	80492871	1
2 Pin Cap (for Pressure Switch Plug)	CR0032917	1
Wire Ties	90190201	6
Label Kit	65701750	1
BevMax 4 CO ₂ to R134a Conversion Instructions	M150.4	1

Part descriptions, numbers, and kits are subject to change without notice.

NOTICE: To properly complete this conversion process, there are 6 sections.

INDEX

1. Conversion Kit Parts & pictures – pages 1 and 2.
2. AC Power Distribution Box Replacement Procedure - pages 3 through 7.
3. R744 (CO₂) Refrigeration System Removal Procedure - pages 8 through 15.
4. R134a Refrigeration System Installation Procedure - pages 16 through 23.
5. Programming Requirements - pages 24 through 26.
 - a. Note: Model Number Reset is required
6. Vender Serial/Data Label Replacement/Installation Procedure - pages 27 through 31.
7. BevMax 4 CO₂ to R134a Conversion **Quick Steps** - page 32.

CRANE[®] MERCHANDISING SYSTEMS

SERVICE INFORMATION



80492871 Defrost Control Harness R134a



80492929 Compressor Harness



65701750 Label Kit



CR0032917 2 Pin Cap



65707070 Domestic R134a AC
Power Distribution Box



80389661 R134a Conversion
Label

SERVICE INFORMATION

AC Power Distribution Box Replacement Procedure

Tools required:

- #2 Phillips Head screwdriver
- 1/4" Hex head nut driver
- Snips to cut wire ties
- Flashlight

Installation:

NOTE: The R744 (CO₂) Refrigeration System must be replaced with an R134a Refrigeration System as part of this procedure.

1. Unplug the vending machine.
 - a. Locate the power supply cord on the back of the vending machine and unplug the unit from power source.
2. Unlock the vending machine.
 - a. Unlock the vending machine and open the monetary door.



3. Locate the R744 (CO₂) AC Power Distribution Box. It will be identified with a green label indicating it is for use with R744 (CO₂) refrigeration systems.



CRANE[®] MERCHANDISING SYSTEMS

SERVICE INFORMATION

4. Removing the four (4) wire harnesses and power supply cord from the existing AC Power Distribution Box.
 - a. Locate and identify the four (4) wire harnesses and the power supply cord attached to the AC Power Distribution Box.
 - i. Two pin block Pressure Switch connector.
 - ii. Four pin block Relay connector.
 - iii. Six pin block Refrigeration System connector (Lower left-hand side).
 - iv. Nine pin block Output Power connector (Middle right-hand side).
 - v. Main Power Supply Cord.



4 . a .



4 . b .



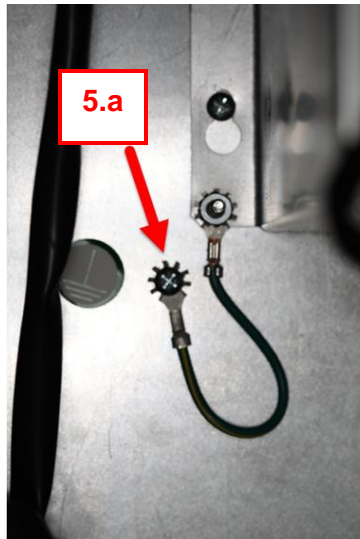
4 . c .

- b. Disconnect the four (4) wire harness and the Main Power Supply Cord from the AC Power Distribution Box. (These are the harnesses identified in step 4.a). Note that the 2, 4, and 6 pin connectors have a lock tab that must be pressed to allow it to be pulled from the connector attached to the AC Power Distribution Box. The 9 pin connector does not have a lock tab and may be pulled directly out from AC Power Distribution Box.
 - c. Use the new 2 pin plug cap provided in the kit to cap the two pin pressure switch harness. Coil the harness and tie it with the wire tie and tuck it away. This harness is not required with the R134a system.

CRANE[®] MERCHANDISING SYSTEMS

SERVICE INFORMATION

5. Disconnect 2 Ground Wire Connections from the AC Power Distribution Box.
- a. Locate the Ground Wire Connection on the lower left-hand side of the AC Power Distribution Box. **NOTE:** The Ground Wire Fastener employs a star washer and must be used in the location. Remove the Ground Wire Fastener using a #2 Phillips Head Screw Driver.



- b. Locate the Ground Wire Connection on the lower right-hand side of the AC Power Distribution Box. **NOTE:** The Ground Wire Fastener employs a star washer and must be used in the location. Remove the Ground Wire Fastener using a 1/4" Hex Head Nut Runner/Driver.



SERVICE INFORMATION

6. Loosen and do not remove the two (2) #2 Phillips Head Screws and remove and save the two (2) 1/4" Hex Head Screws used to secure the AC Power Distribution Box to the interior of the Monetary Area.



- a. Slide the R744 (CO₂) AC Power Distribution Box upwards to remove. (Note: all harnessing must be disconnected from the AC Distribution Box before performing this step). Caution: The edges of the AC Power Distribution Box may be sharp. Be careful while handling to prevent personal injury and to not to cut or damage wires.
- b. Properly dispose of the R744 (CO₂) AC Power Distribution Box.
7. Install the new R134a AC Power Distribution Box.
- a. Align the holes in the R134a AC Power Distribution Box to the two (2) fasteners on the Monetary Area Wall and slide downward into place being careful not to pinch wires against the rear wall. Install the two 1/4" Hex Head Screws removed and saved in step 6.
- b. Using a #2 Phillips Head Screwdriver and a 1/4" Hex Head Nut Runner/Driver secure the R134a AC Power Distribution Box to the Monetary Area.
8. **Install the Ground Wire Connections on the lower left hand and lower right hand sides using the fasteners that employ a star washer.**

- a. Reference pictures displayed on steps 5.a and 5.b.

CRANE[®] MERCHANDISING SYSTEMS

SERVICE INFORMATION

9. Connect the Wire Harnesses, except the Compressor Harness, to the AC Power Distribution Box.
- a. Connect the existing four pin Relay Wire Harness to the R134a AC Power Distribution Box as shown.
- b. Connect the existing nine pin Output Power Wire Harness to the R134a AC Power Distribution Box as shown.



New Compressor Harness supplied in the kit

Note: New compressor harness will plug in to this after the completion of the installation of R134a deck

NOTE: DO NOT CONNECT THE MAIN POWER SUPPLY CORD AT THIS TIME

NOTE: THIS COMPLETES THE INSTALLATION OF THE AC POWER DISTRIBUTION BOX.

SERVICE INFORMATION

CO₂ Refrigeration System Removal

Tools Required:

Drill 1/4" socket 7/16" (or 11mm) socket 3/8" socket Ratchet driver
Phillips screw driver Wire tie cutter

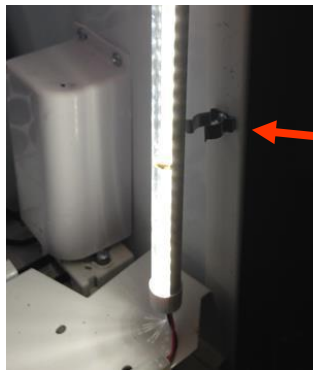
CAUTION: Weight of Refrigeration System is approximately 71 pounds.

Repair should be performed by a qualified Service Technician.

1. Open the product compartment door. Remove the bottom LED Light Assembly from its two brackets that hold it in position. Move the LED Light Assy. out of the way of the shelves.



Screw securing the tray



LED Light assy
holding bracket.

Bottom LED Light

2. Remove product from the bottom 2 (D & E) trays of the Vender.
3. Tray D & E removal preparation.
 - a. Remove the 2 screws securing the Trays to the Tray Supports.
4. Remove Tray D carefully from the vender. (To remove the tray, lift the back upward out of the rear tray support hook and slide forward to remove).
5. To remove Tray E, manually raise the Delivery Cup up to tray C. Remove Tray E carefully from the vender. (To remove the tray, lift the back upward out of the rear tray support hook and slide forward to remove).

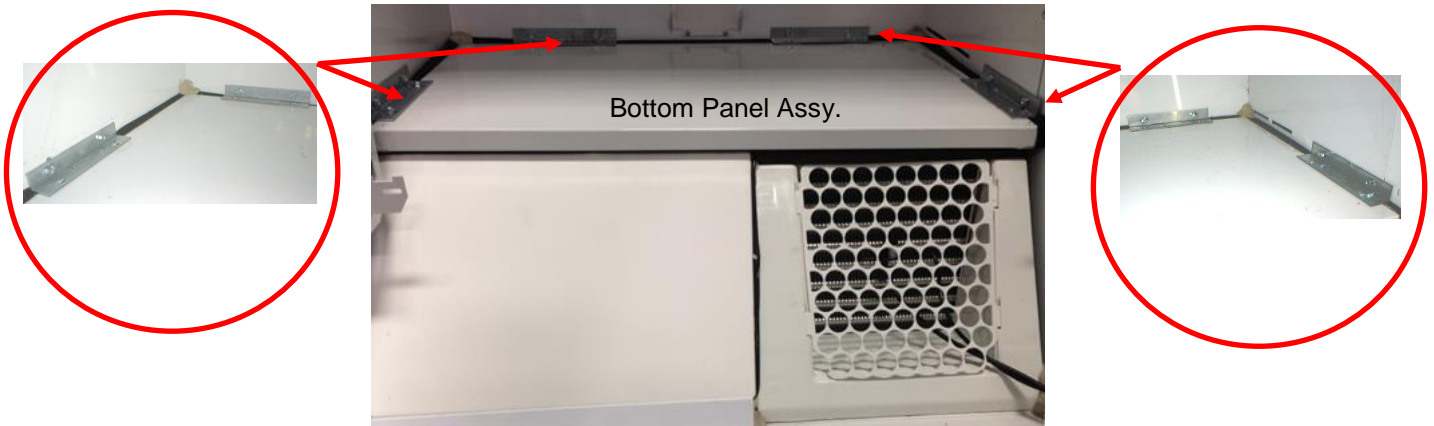
Note: Properly dispose of all Permagum during removal. Only use new Permagum during installation of new Unit.

SERVICE INFORMATION

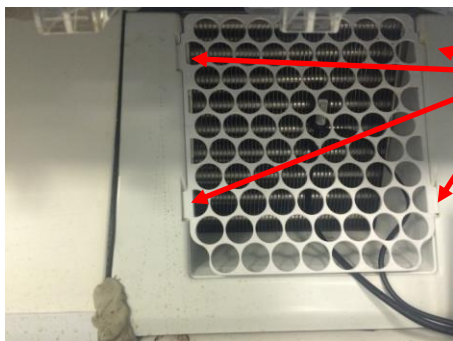
6. Remove the Bottom Panel Assembly.

- a. Remove the Bottom Panel Assembly by removing the eight 5/16" screws, and then lift the panel up and outwards to remove.

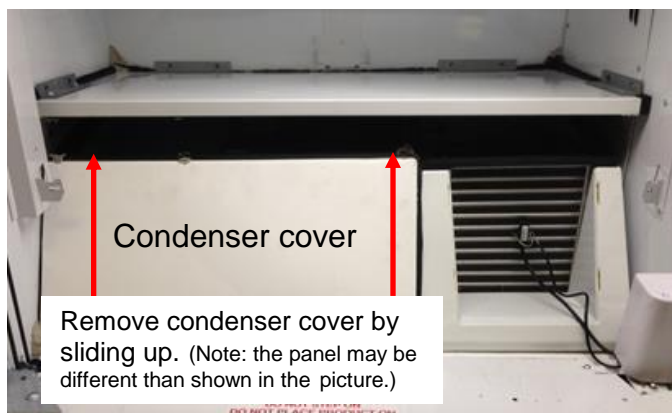
Note: Removed Panel will be used again later in the R134a System installation.



7. Remove the Evaporator Inlet Grill by pulling towards you and the guard tabs will slide from the slots in the foamed panel assy. Be careful not to damage the Temperature Sensor Wire and Defrost Control Bulb.



8. Remove the existing Condenser Cover (Slanted Panel Assy.) by carefully sliding it up and out of vender. Panel will be used again later in the R134a System installation.



CRANE[®] MERCHANDISING SYSTEMS

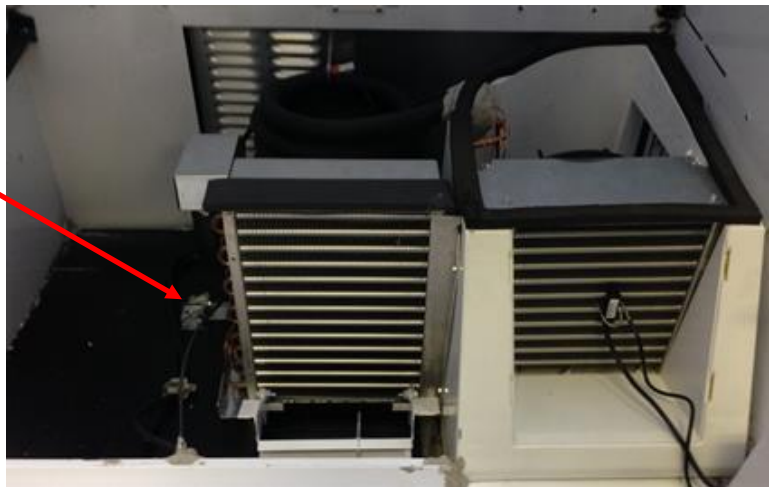
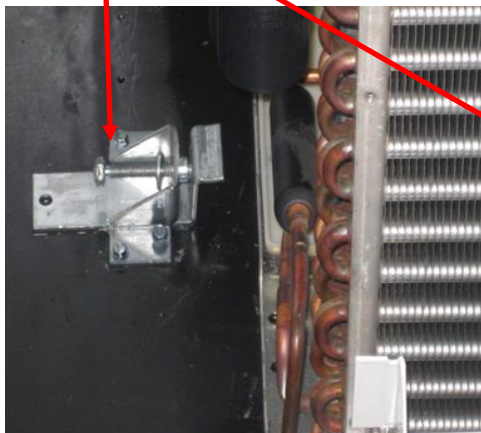
SERVICE INFORMATION

9. Remove the Baffle by unscrewing Phillips screws at the bottom and in the back (Note: Baffle may not be in all models).



10. Turn the 7/16" bolt (11mm) in the Refrigeration Deck Clamp counterclockwise until it fully disengages the Refrigeration System from the Cabinet Wall.

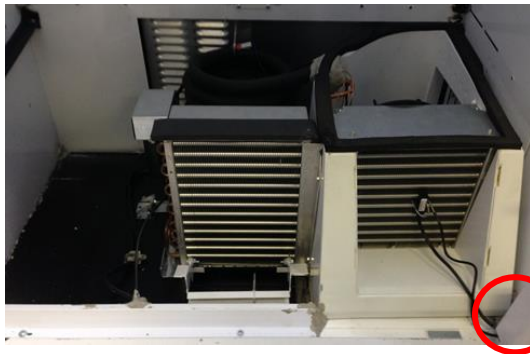
Refrigeration tie down bolt.



CRANE[®] MERCHANDISING SYSTEMS

SERVICE INFORMATION

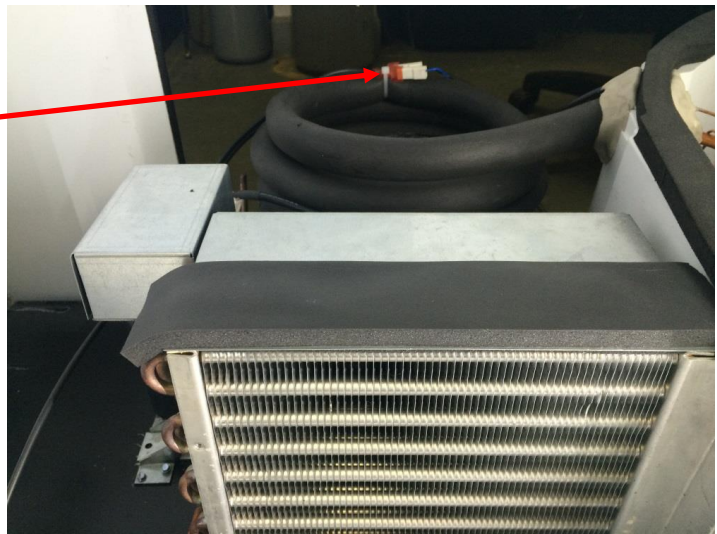
11. Caution: Carefully remove the Temperature Sensor and Defrost Control Sensor Bulb from the front of the Evaporator and lay them out of the way so they will not get damaged when the Refrigeration System is removed.



Note: The X motor does not have to be removed.

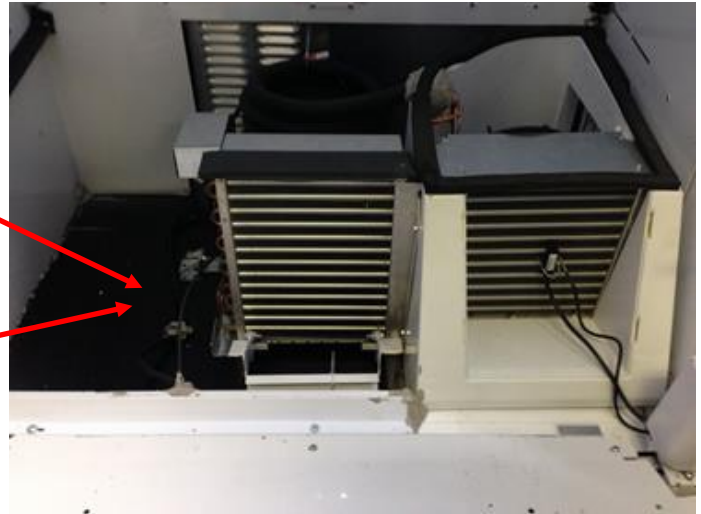
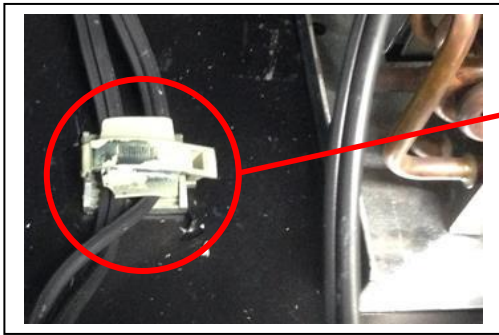
12. Cut the wire tie and unplug the evaporator power leads of the CO₂ System.

Evaporator Power Leads



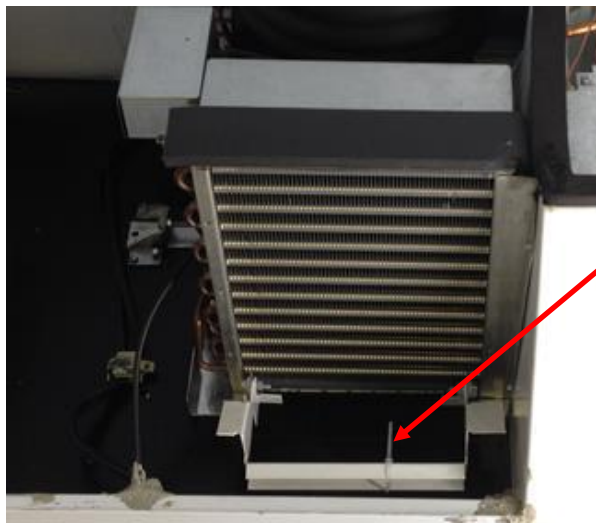
SERVICE INFORMATION

13. Remove the 2 clamps securing the Compressor Power lead to the base plate.



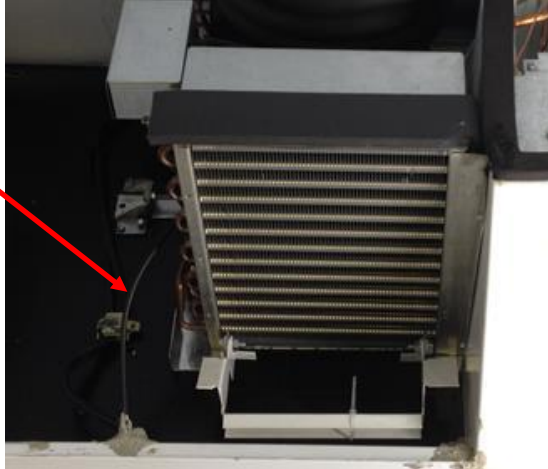
14. Unplug the Compressor Power connector.

15. Cut the wire tie from the Refrigeration Unit handle used to remove the system from the vender.



SERVICE INFORMATION

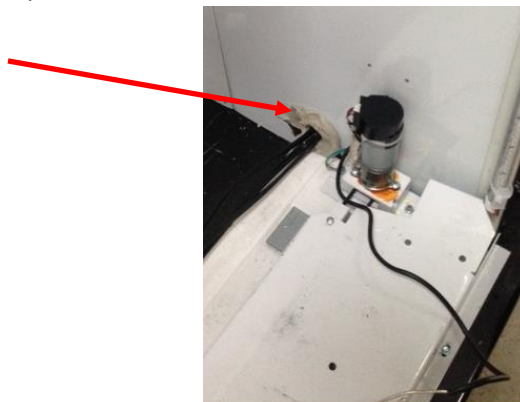
16. Make sure harnesses are out of the way before removing the system.



17. Carefully remove the Refrigeration Unit from the vender.
a. Caution: The Refrigeration Unit weighs approximately 71 pounds.



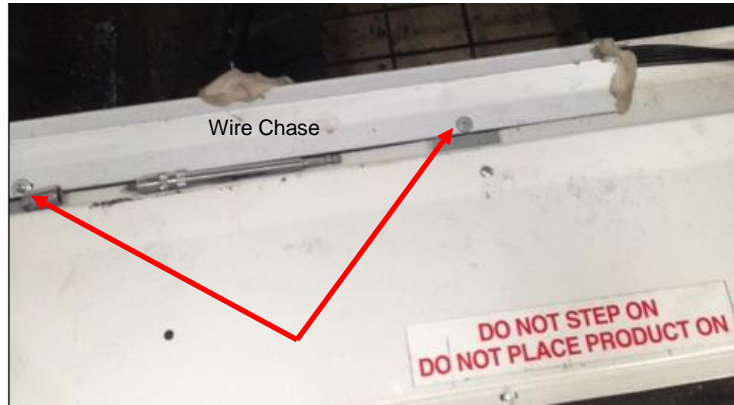
18. Remove the R744 (CO₂) Compressor Power Cord from the Vender and dispose properly.
a. Remove the putty from the lower service wall access hole near the X Motor from both sides of the wall. (Picture shown without X motor cover for clarity.)



CRANE[®] MERCHANDISING SYSTEMS

SERVICE INFORMATION

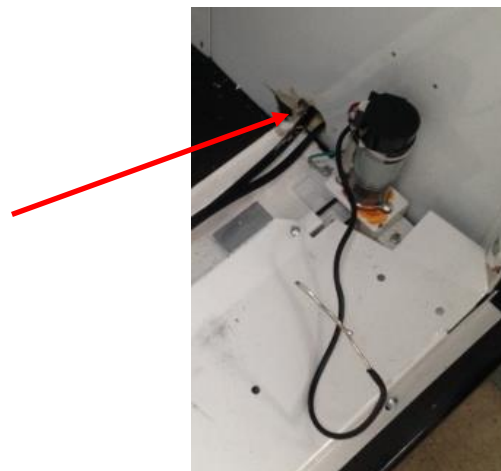
- b. Remove the 2 screws that secure the Wire Chase to the Cabinet Base.



- c. Remove the putty from the back side of the Wire Chase where the wires come out shown below.



- d. Route the R744 (CO₂) Compressor Cord through the service wall access hole to the service area.



SERVICE INFORMATION

- e. Remove the cover on the Defrost Control in the service area. (Use a short #2 Philips Head Screw Driver)

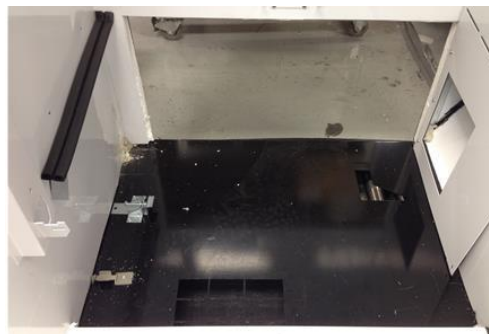


- f. Unplug the Defrost harness connectors from the Defrost Control.



- g. Properly dispose of the existing R744 (CO₂) Compressor Power Cord.

19. Photo of Refrigeration System removed from cabinet.



NOTE: THIS COMPLETES THE REMOVAL OF THE CO₂ REFRIGERATION DECK.

SERVICE INFORMATION

R134a Refrigeration System Installation

Tools Required:

Drill	7/32" drill bit	1/4" socket	7/16" socket
1/8" drill bit	Phillips screw driver	3/8" socket	adhesive remover
5/32" drill bit	Wire tie cutter	Socket driver	

Package includes the following items.

Description	65701270 Domestic BevMax 4 Refrigeration Kit	QTY
BevMax 4 Refrigeration Deck Assy.	CR0002267	1
Evaporator Plastic Grill	CR0007259	1
Foam Tape .39 X 2"	D574	4
Refrigeration Unit Carton	80541225	1
Package Liner Refrigeration Unit	80541226	1
Wire tie, 7.5"	90190201	2
Permagum	80360113	.12 lb
*Installation Instructions	M124.x	1

***Properly dispose of M124.X instructions and use M150.X instructions when replacing CO₂ system with R134a system.**

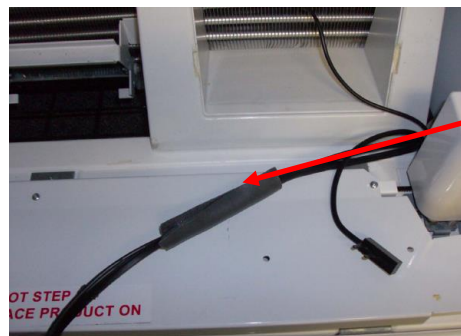
1. Take the existing Bottom Panel Assembly removed earlier and carefully remove all gaskets from the sides and back edges. Note: you will need to use some type of adhesive remover to remove the old tape. This step is critical before installing the new gasket to ensure the panel seals to cabinet to prevent Condensation issues.
2. Carefully inspect all gaskets on the new R134a Refrigeration System. Replace any that are damaged to prevent Condensation issues.
3. Place new R134a Refrigeration Unit on the base of Vender. Caution: New R134a Refrigeration Unit weighs approximately 71 pounds. Slide system in position. Ensure press pin on bottom of system will line up with the guide slot in base plate.



SERVICE INFORMATION

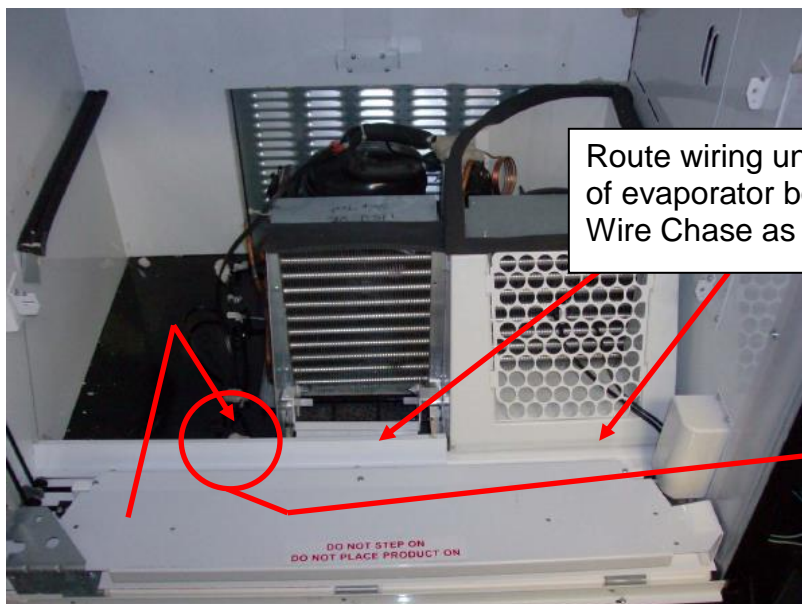
Note: The Guide Slot viewed from back in picture above assists the system in pushing left and forward as secured to obtain required seal.

4. Route R134a Power Cord from the R134a AC Distribution Box through the access hole in the Service wall to the refrigerated area of cabinet.
5. Install new foam tape around the new R134a Power Cord provided in the kit and the existing Evaporator Power Harness as shown below close to where it lines up with the evaporator box.



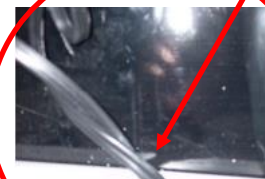
Install new foam tape around where the wire line up with the box.

6. Place the R134a Power Cord and Evaporator Power Harness under the Wire Chase removed in step 19b on page 14 and under the front edge of plastic evaporator box. Secure Wire Chase with hardware from step 19b on page 14.



Route wiring under front edge of evaporator box and under Wire Chase as shown.

Install Permagum around harness and fill hole in Wire Chase.



SERVICE INFORMATION

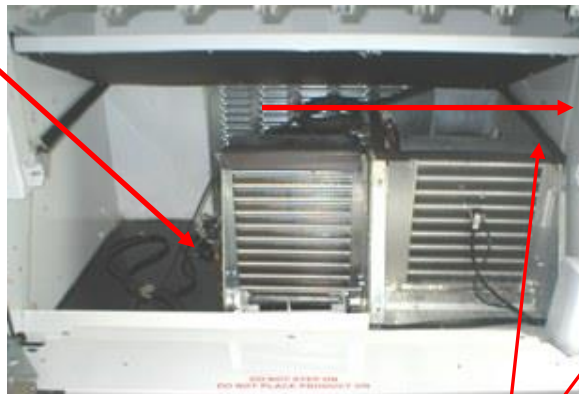
7. Secure the Wire Chase in position with the hardware from step 19b on page 14.
8. Permagum back side of Wire Chase where wire comes out. See picture below.



9. Permagum both ends of Wire Chase before locking Refrigeration System in place and before installing Condenser Cover Grill.
10. Turn the 7/16" bolt in the Refrigeration Deck Clamp clockwise until it fully engages the Refrigeration System tight to the Cabinet Wall on the right.

Tip: Shine a flashlight at the seal to ensure the proper seal against the wall.

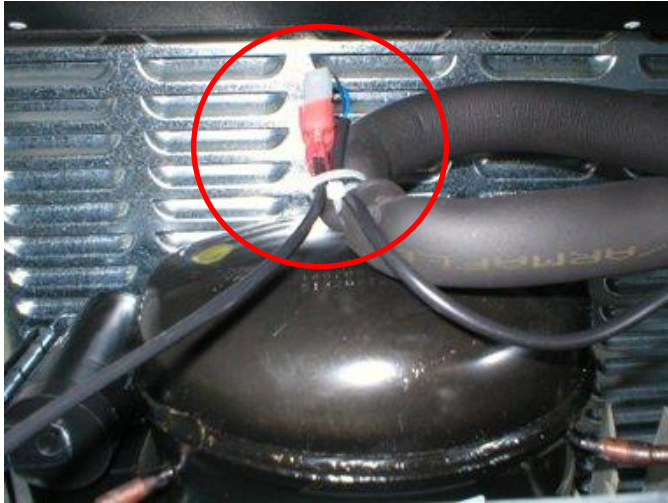
Refrigeration tie down bolt.



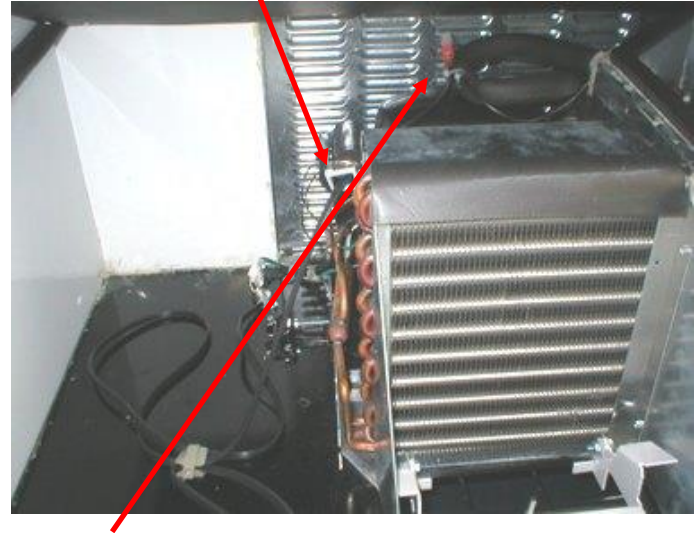
Shine flashlight here to ensure the seal against the wall

SERVICE INFORMATION

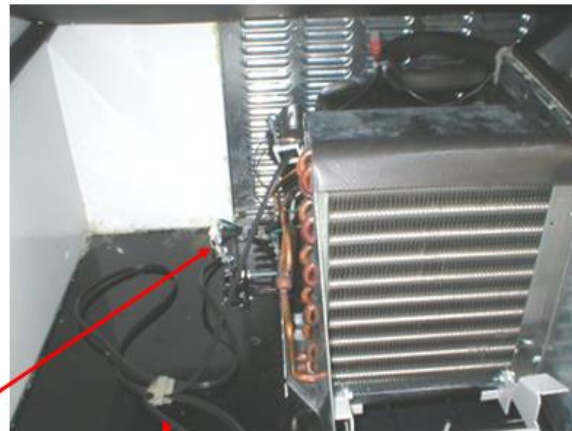
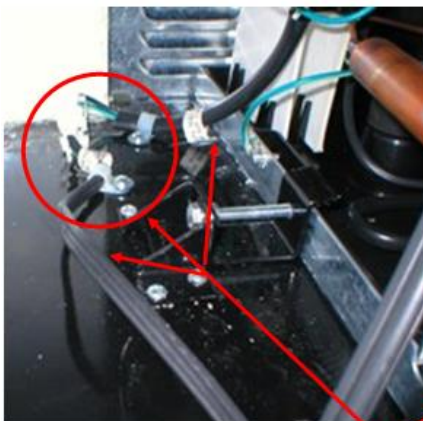
11. Connect the Evaporator Power Connector and wire tie as shown. This keeps the wires away from the Condenser Fan Blade.



Evaporator wire goes in Clip



12. Plug in the Compressor Power Connector and secure to cabinet base and refrigeration unit base plate with 2 small clamps removed in step 14, page 12.

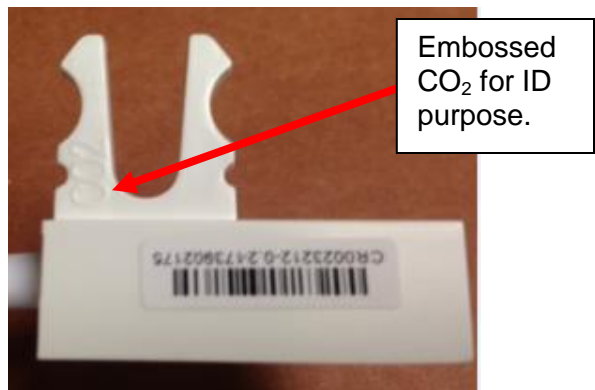
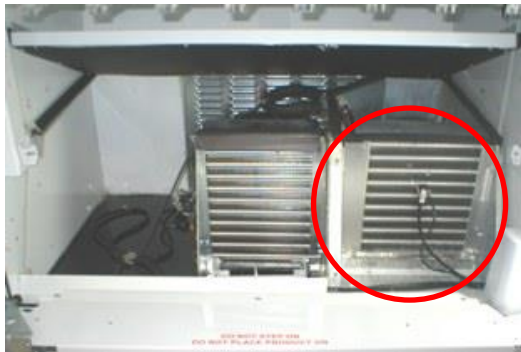


Secure wires

13. If the machine had a Baffle, reinstall the Baffle at this time.

SERVICE INFORMATION

14. Carefully install the Temperature Sensor and Defrost Control Sensor Bulb, removed in step 12 on page 11, in the Evaporator.



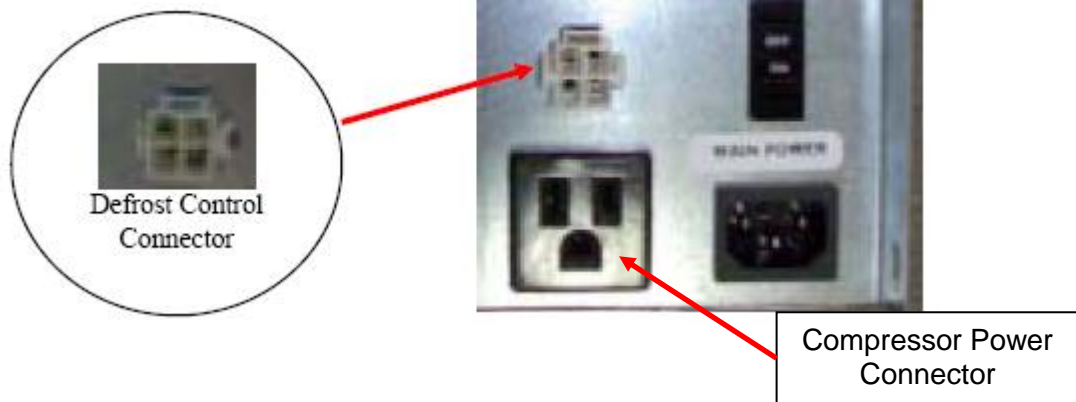
15. If installing Temperature Sensor CR0023212 ensure you are using the correct tines for R134a Refrigeration Unit. The tines used for a CO₂ Refrigeration Unit have CO₂ embossed in one of the tines as shown above.
16. Install the new Defrost Control Harness provided in the kit to the existing Defrost Control.



17. Secure the Defrost Control Assy. to the Service wall where it was removed in Step 19e on page 15.

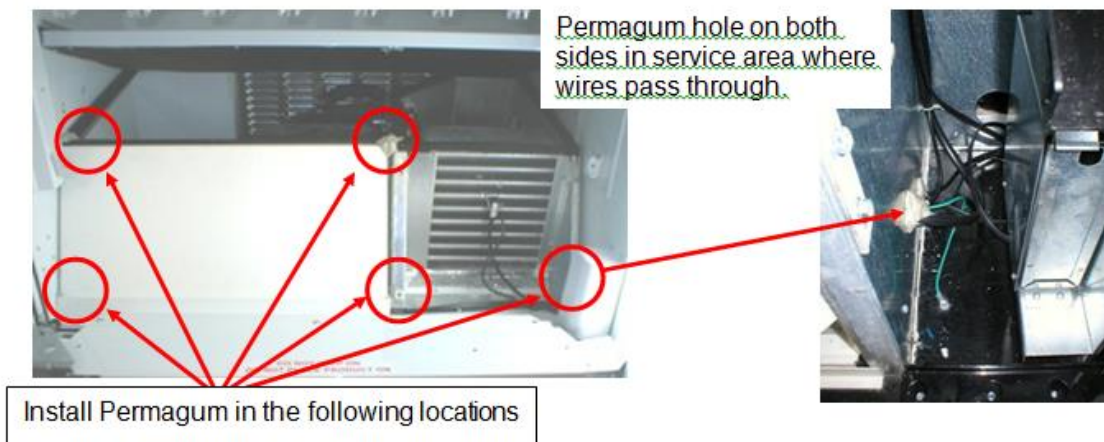
SERVICE INFORMATION

18. Plug the 4 Pin Defrost Harness Connector to the 4 Pin Receptacle on the R134a AC Distribution Box.



19. Plug the Compressor Power Connector to the 3 pin receptacle on the R134a AC Distribution Box.

20. Before installing Condenser and Refrigeration Covers, install Permagum in 5 areas shown with circles.



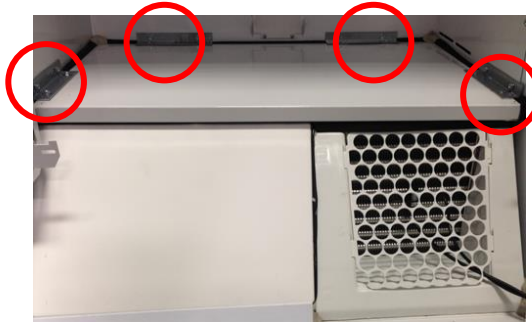
PERMAGUM IS CRITICAL TO THE SEAL OF THE SYSTEM

SERVICE INFORMATION

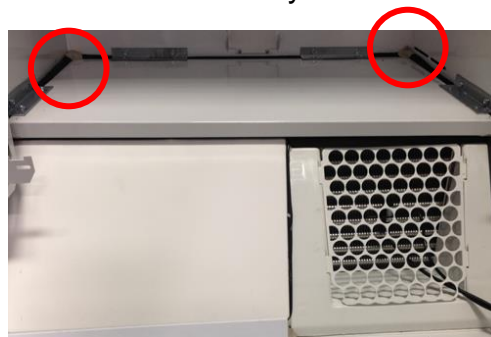
21. Install Condenser Cover (Slanted Panel Assy.). New Condenser Slanted Panel Assy. will only work with Plastic Evaporator Box. Note: If you add some silicone or Vaseline to the right & left side gaskets it will help the panel slide in position easier.



22. Install Bottom Panel Assembly and secure with the eight 5/16" screws removed in step 7 on page 9. Install the Evaporator Inlet Grill (cover) by inserting the guard tabs in the slots in the foamed panel assy. Be careful not to damage the Temperature Sensor Wire and Defrost Control Bulb.



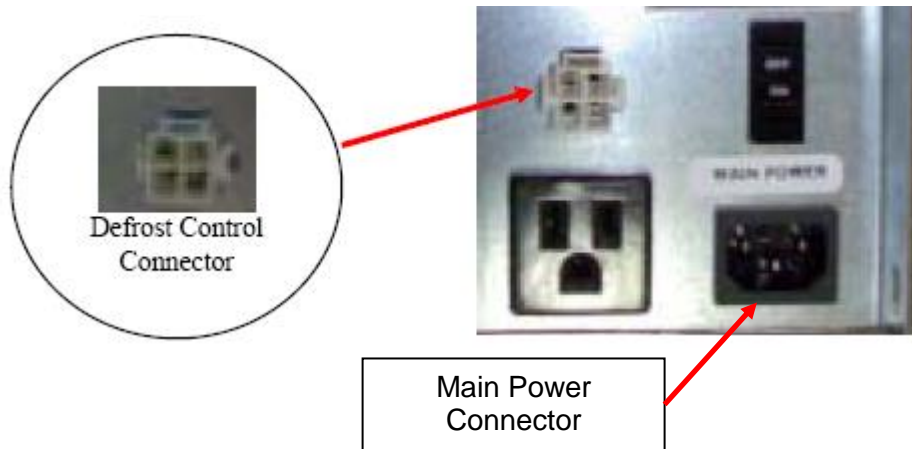
23. Permagum back corners of Bottom Panel Assy.



24. Install Tray E and secure with 2 screws removed in step 3, page 8.
25. Install Tray D and secure with 2 screws removed in step 3, page 8.
26. Install the vertical LED Light removed in step 1, page 8.

SERVICE INFORMATION

27. Plug in Main Power Cord to the AC Distribution Box.



NOTE: THIS COMPLETES THE INSTALLATION OF THE R134A REFRIGERATION SYSTEM.

SERVICE INFORMATION

Model Reset and Programming Requirements

Caution: Document all Vender settings in the same manner as when you replace the Vender Control Board before proceeding.

Required programming changes to the Vender. Refer to the programming section of your BevMax 4 Coke Service Manual 80390466 for more details on programming.

IMPORTANT: Resetting of Model Number will set many features back to factory default settings. These include –

ITEM	RESET TO
Tube Fill	Cleared
Cash Counters each select	\$0.00
Sales Counters each select	0
Price Program	99.95
StS Programming	Option 1
Config 1	0 (single price)
Config 2	0 (disabled or off)
Config 3	0 (enabled or on)
Config 4	0 (disabled or off)
Config 5	0 (disabled or off)
Config 6	Not used
Config 7	0 (disabled or off)
Config 8	0 (disabled or off)
Config 9	0 (disabled or off)
Config 10	0 (escrow bill)
Correct Change	0 (disabled or off)
Preview Password	Reset to 4231
Language	English
Tim Programming	0 (disabled or off)
Lighting Control	0 (disabled or off)
Refrigeration	Set point 35°F
Select Block 1	0 (disabled or off)
Select Block 2	0 (disabled or off)
Select Discount	0 (disabled or off)
Health Safety	0 (disabled or off)
Over-ride Switch	0 (disabled or off)
Remote Vend Mech	0 (disabled or off)
Combo Vend Discount	0 (disabled or off)

1. Turn the power on to the Vender.
2. To change the Venders Model number from 5800-4C or 3800-4C (CO₂ Vender) to 5800-4 or 3800-4 (R134a Vender) for proper operation of the vender, go to Dixie-Narco Factory Setup Menus - BevMax Setup/Test Modes in programming.

SERVICE INFORMATION

3. Press service switch on controller. When the display reads Error Codes press and let go of the following keys in order, "1" "5" "1" "5" "1".
 - a. When entered correctly the display will read "BevMax Setup".
4. Press the 4 key to enter Set Up modes.
5. To Program Vender Model Number in BevMax Setup Set Model mode.
 - a. Press key 4 to enter menu, Displays "Reset Model?"
 - b. Continue 4 = Y, 1 = N
 - c. Press A key to scroll thru the models.
 - d. Models are 3800-4, 5800-4, 3800-E4, 5800-E4. The display will show save? A = ^, * = Y, Clear = no. Press A key to scroll through model numbers. Press the * key at the correct model to save setting. Note: Program the model 5800-4 for all Domestic 134a BevMax 4 & 3 Venders with 9 columns per shelf. Program the model 3800-4 for all Domestic BevMax 3800-4 with 7 columns per shelf. There is not an option for a model number for 5800 and 3800 glass front.
 - e. Program Vender Shelf Configuration in Coke Factory Setup Set Shelf Config. Allows for shelf configuration to be set:
 - f. This submenu allows the service technician to program the electronics to match the different settings available for the shelves. These settings are available to vend different package heights. The factory default setting is Shelf Setting D2. Press the number "4" on the keypad and display will show "Set Shelf Config". Press the "4" key and display will show current setting. To change the setting press key 4 until the current setting flashes. Press 2 to scroll through the following: A = G setting, B = M1 setting, C = M2 setting, D = D setting, E = E setting, F = E1 setting, 1 = D2 setting, 2 = E3 setting, & 3 = E4 setting. D2 = BM3 5800-4 domestic setting. Note Shelf settings G, M1, & M2 settings are used in venders prior to 8487-0001AE. Shelf settings D, E, & E1 settings are used in venders 8487-0001AE to 8900-0001BH. Shelf settings D2 is setting used in all domestic BevMax 4 5800-4 venders and E3 (5 shelf Export) & E4 (4 shelf Export) are used in export BevMax 4 5800-E4 venders 8900-0001BH and higher. Once the desired setting is showing on the display press the "4" key to save the setting. Note: all shelf settings have to be physically set to match the programmed setting. You cannot set the physical shelf settings differently. Press the "1" key to return to "Set Shelf Location". Press the "2" key to scroll to the next menu item below. Start with the setting recorded on the label on the top inside of service door.
6. Program Vender Shelf Offset in Coke Factory Setup Set Shelf Offset. Start with the setting recorded on the label on the top inside of service door.
 - a. This sub menu will be used to set the XY to the proper shelf height. Press key number "4" one time at the "Shelf Offset" prompt. The VMC will enter the shelf adjust option and display the current shelf offset position as "Shelf Offset: 900 3310 counts = 1 inch". To adjust Shelf (Y) Offset (up and down), enter a new number and press the "*" key to save and display will show "#### Offset recorded. Then press "CLR to go back to "Shelf Offset". Go to Position Test and check the plunger is contacting the targets correctly.

SERVICE INFORMATION

7. Program Vender Hook Offset in BevMax Setup Set Hook Offset.
 - a. On venders with software listed ensure Auto Hook Offset is enabled in BevMax Setup Set Auto Hook Offset.
 - (a) Red Board 740.51 or higher.
 - (b) Blue board 702.01 or higher.
 - b. On venders with software listed and higher ensure if the Auto Hook Offset is disabled in BevMax Setup Set Auto Hook Offset you will need to set the Hook Offset as described in steps 3.i.
 - c. On venders with software prior to:
 - (a) Red Board 740.51.
 - (b) Blue board 702.01.
 - i. Start with the hook offset setting recorded on the label on the top inside of service door.
 - a. This sub menu will be used to test the vend mechanism alignment to the port area confirming the proper X belt tension. Adjust Hook Swipe "X" Offset (left to right). Press the number "4" key and the display will show "Hook Swipe ####, 3310 counts = 1 inch". For factory default setting see born on label settings listed on service door. To change the off set, pull the top left (white) door switch in the out position to power the XY motors. Press the "✱" key once will automatically run the Delivery Cup Assembly to the swipe position and allow specific vender coordinates to be changed and saved in the control board memory. Use the numbers on the key pad to change the coordinates. Press the "✱" key to save the new setting and the Delivery Cup Assy. will automatically go to the "Home" position, then move back to the swipe position again. Press the "✱" key to send the Delivery Cup Assy. back to the "Home" position and the programming will return to "Set Hook Offset".
8. Set prices in Price Program – Price Setting Routine.
9. Set all other programming modes defaulted that are used in equipment. Refer to Service Manual for instructions as needed.
10. Test vender for proper operation.

NOTE: THIS COMPLETES THE MODEL RESET AND PROGRAMMING REQUIREMENTS.

SERVICE INFORMATION

Replacement Vender Label Procedure

Completing the following steps is critical for future reference when servicing and ordering replacement parts for this vender as using the serial number only when servicing or ordering parts from the manufacturer will identify the vender as a R744 (CO₂) manufactured vender.

Description	Kit # 65701750 BevMax 4 R134a Conversion Label Kit	QTY
Label Covers	80385617	4
R134a Conversion Label Kit	80389661	2

Tools required:

- Black Permanent Marker

1. Interior Serial Plate/Label Modification and installation of additional Data Plate/Label.
 - a. Locate the interior serial/data plate label in the refrigerated section on the left interior wall near front of cabinet of the vending machine. **NOTE:** Vending shelf removed for illustrative purposes only.



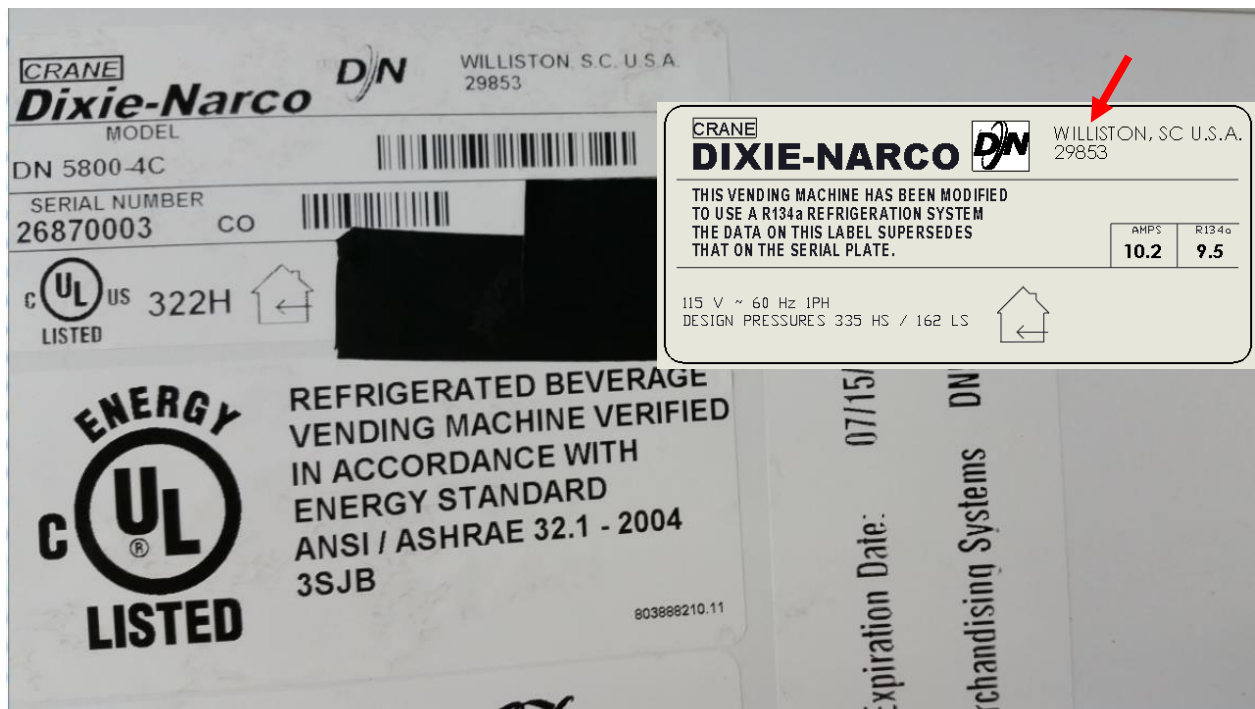
CRANE[®] MERCHANDISING SYSTEMS

SERVICE INFORMATION

- b. Strike-out the information on the existing serial/data plate using a **wide black permanent marker**. **NOTE:** Areas to be struck-out are shown as a gray area for illustrative purposes only.



- c. Fix the additional interior data label next to the existing serial/data label **in a visible location as shown**.



SERVICE INFORMATION

2. Exterior Serial Plate/Label Modification and installation of additional Data Plate/Label.

- a. Locate the exterior serial/data plate label on the upper left back of the vending machine.



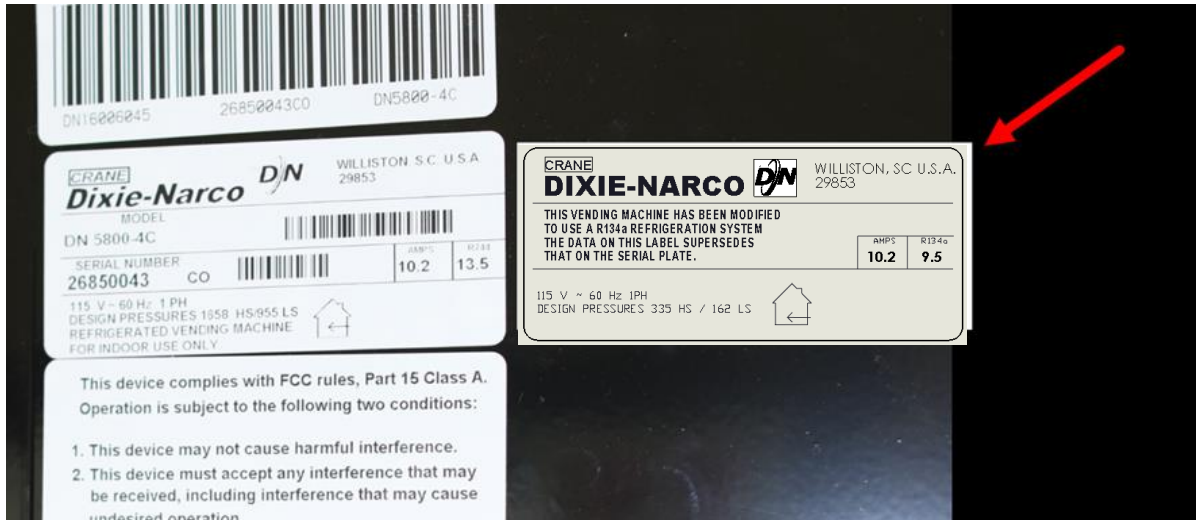
- b. Strike-out the information on the existing serial/data plate using a **wide black permanent marker**. **NOTE:** Areas to be struck-out are shown as a gray area for illustrative purposes only.



CRANE[®] MERCHANDISING SYSTEMS

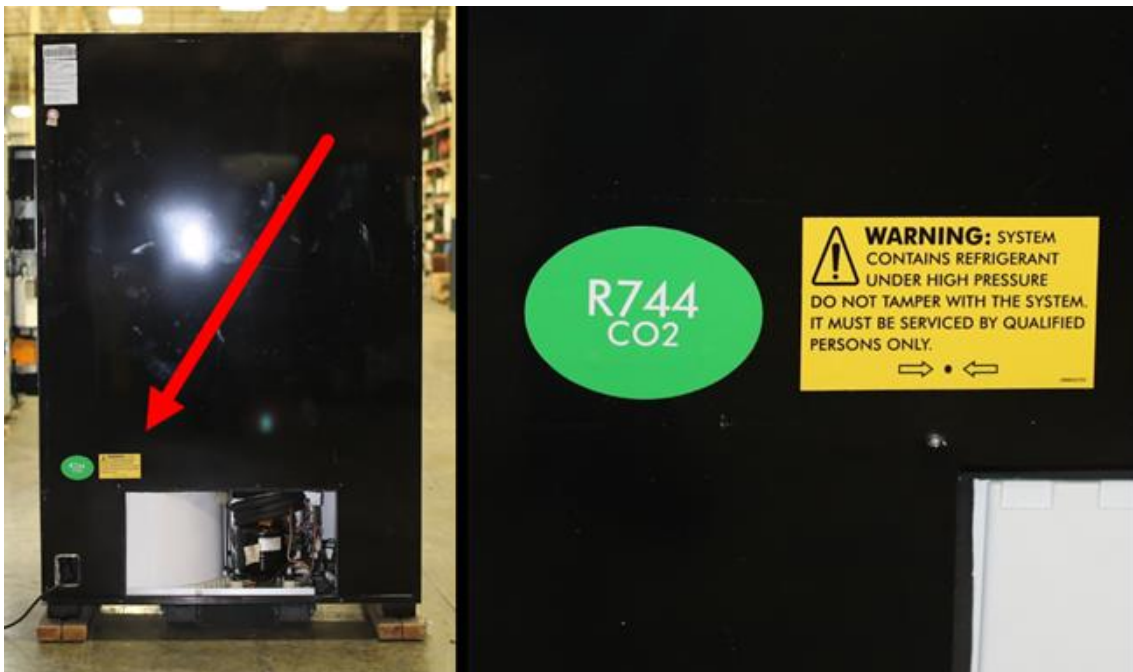
SERVICE INFORMATION

- c. Fix the additional exterior data label next to the existing serial/data label as shown.



3. Exterior CO₂ and High Pressure Label Replacement.

- a. Locate the exterior CO₂ labels on the lower left back of the vending machine.

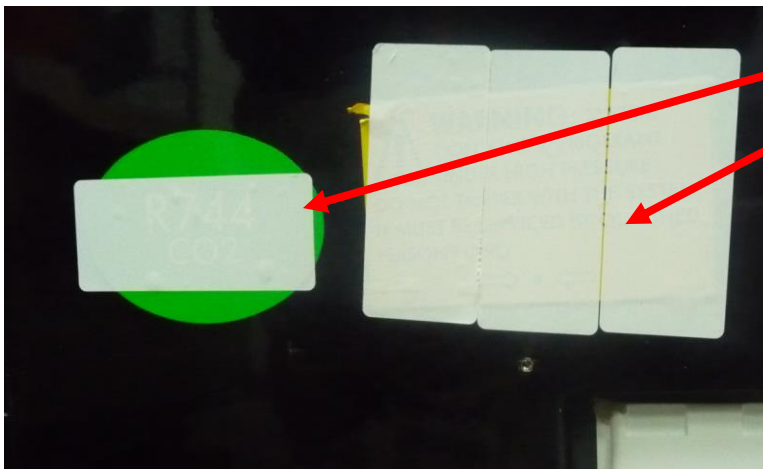


SERVICE INFORMATION

- b. Place one blank label over the CO₂ label and three blank labels over the High Pressure Labels as shown. **NOTE:** Blank labels are shown as gray for illustrative purposes only.



Place Blank Labels over existing labels.



DO NOT REMOVE UL OR THE CONTROL NUMBER LABEL.

DO NOT REMOVE "REFRIGERATED VENDING MACHINE. INDOOR USE ONLY" LABEL.

NOTE: THIS COMPLETES THE REPLACEMENT VENDER LABEL PROCEDURE.

SERVICE INFORMATION

BevMax 4 CO₂ to R134a Conversion Quick Steps

1. Unplug Vender.
2. Remove existing R744 (CO₂) AC Distribution Box.
 - a. Locate 2 Pin Pressure Switch Plug, install cap and wire tie out of way as it will no longer be used.
3. Install new R134a AC Distribution Box.
4. Remove R744 (CO₂) Refrigeration System.
 - a. Including R744 (CO₂) Refrigeration/Defrost Control Harness.
5. Install new R134a Refrigeration System.
 - a. Including R134a Compressor Harness and R134a Defrost Control Harness.
6. Program Vender Model Number in BevMax Setup Set Model Number mode.

Caution: Document all Vender settings in the same manner as when you replace the Vender Control Board before proceeding.

 - a. Program Vender Shelf Offset in Coke Factory Setup Set Shelf Offset.
 - b. Program Vender Hook Offset in BevMax Setup Set Hook Offset.
 - c. Set prices in Price Program – Price Setting Routine
 - d. Set other programming modes defaulted by Model Reset as needed.
7. Install new labels identifying Vender as now having an R134a Refrigeration System.
 - a. Completing this step is critical for future reference when servicing and ordering replacement parts for this vender as using the serial number only when servicing or ordering parts from the manufacturer will identify the vender as a R744 (CO₂) manufactured vender.
8. Test vender for proper operation.

NOTE: THIS COMPLETES THE BEVMAX 4 CO₂ TO R134a CONVERSION QUICK STEPS.